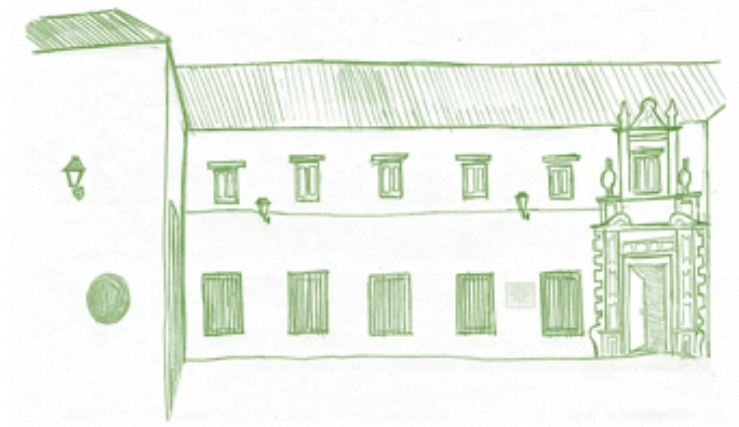


MICROECONOMETRIC EVALUATION OF LABOUR MARKET POLICIES WITH

STATA® 16



STATA 2020

Escuela de especialización de STATA



MICROECONOMETRIC EVALUATION OF LABOUR MARKET POLICIES WITH



Dates:

Pre-recorded sessions (available from 1st to 14th December 2020)

Live sessions 10, 11 and 14 December 2020

Time schedule: 9:00-13:00 (GMT+2)

Location: Online learning thorough UNIA's virtual campus. This comprehensive webinar is hosted through Blackboard and runs over a total of 25 hours (10 synchronous plus 21 hours of asynchronous learning by means of pre-recorded lectures). The synchronous part runs over three days of online instruction for 3,5 hours per day.

Delivered by

Barbara Sianesi, PhD. Former senior research economist at the Institute for Fiscal Studies in London.

Overview

The aim of this workshop is to give participants an in-depth introduction to program evaluation, both in terms of research design and quantitative evaluation methods.

The class will consist of theoretical and practical sessions. During the practical sessions we are going to implement the discussed estimators with STATA.

Prerequisites

Knowledge of basic statistics and Stata (data handling, running do-files, etc.) is required. The course is open to people coming from all scientific fields, but it is particularly targeted to researchers working in the socio-economic and life-sciences.

Course Format

In the 10 days prior to the live sessions, participants will receive access to the pre-recorded videos to go through them at their own pace. In the recordings the instructor goes through the lecture slides in detail, covering everything she normally covers in the face-to-face part of the course. In the synchronous part, and over three days, participants will join the course

STATA 2020

Escuela de Especialización
de STATA

via Blackboard to participate in live practical work and interact with the instructor. You are required to install the temporary free license of STATA provided prior to the start of the course.

Agenda and Syllabus

Pre-recorded lectures:

available from 1st December to 14th December

Live classes format:

quick recap of each topic/method, related questions and answers and Stata practical to implement that method

10th December

9:00-11:00	Evaluation Problem and Naive Estimator
11:00-11:30	Break
11:30-13:00	Randomised Experiments and Instrumental variables

11th December

9:00-11:00	Regression Discontinuity Design (Sharp)
11:00-11:30	Break
11:30-13:00	Regression Dicontinuity Design (Fuzzy) and OLS

14th December

9:00-11:00	Matching Methods and Before-After
11:00-11:30	Break
11:30-13:00	Difference in differences and Synthetic Control Method

Registration

Registration closes 10 calendar days prior to the start of the course (1st December 2020)

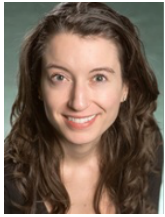
Fees: 168 euros

How to pay: Fill in and submit the application form (<http://unia.es/solicitudCursoSTATA>) to larabida@unia.es. The payment must be done by bank transfer. Please send us proof of the transaction by e-mail joint to your identification card or passport.

STATA 2020

Escuela de Especialización
de STATA

Instructor



Barbara Sianesi is a former Senior research economist at the Institute for Fiscal Studies in London. She holds a PhD in Economics from Milan as well as from University College London, the latter one focusing on the evaluation of social programmes and educational qualifications. She has since been involved in the evaluation of numerous government programs, in the analysis of the consequences of misrecorded treatment status, and in the estimation of the impact of different types and levels of education on individual labour market outcomes in the UK. She has published both in the evaluation and returns to education areas in the Journal of Econometrics, the Review of Economics and Statistics, the Journal of the Royal Statistical Society, Labour Economics, the Journal of Economic Surveys and Fiscal Studies. Barbara has to date taught over 60 courses and practical workshops on the various evaluation methods in different formats and for diverse audiences including the general public, practitioners, social scientist, PhD students, civil servants, government departments and higher education institutions. Her contribution to the literature includes code on ways to improve propensity score matching.

More info:

escuela.stata@gmail.com



Sponsored and organized by:

Fundación Pública Andaluza Centro de Estudios Andaluces

Universidad Internacional de Andalucía

Timberlake Consulting

MSc and PhD en Economía, Finanzas y Computación, Universidad de Huelva y
Universidad Internacional de Andalucía)

